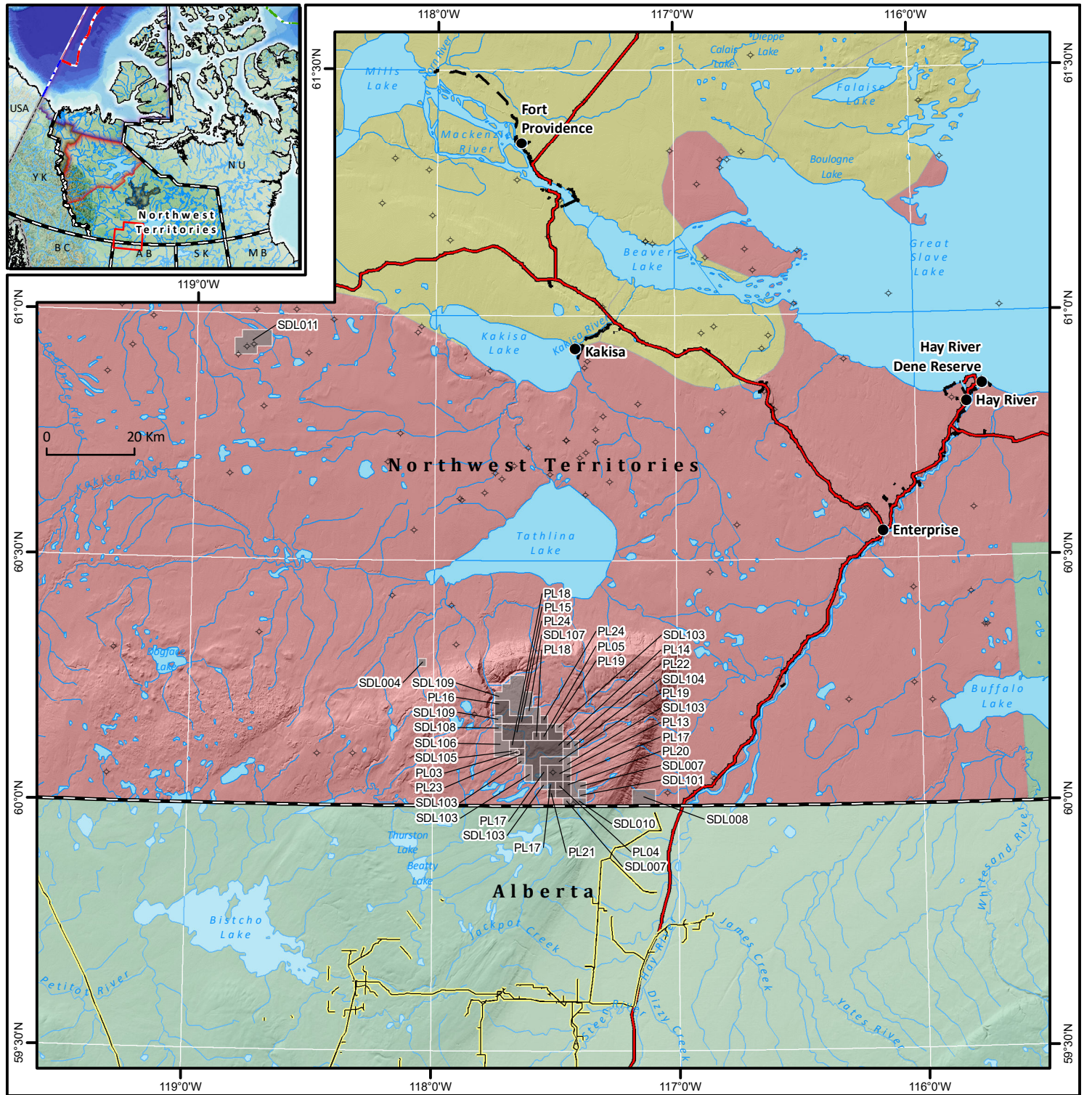


Cameron Hills Oil and Gas Rights, Pipeline Infrastructure and Hydrocarbon Potential

- NWT Communities
 - ◇ OROGO Wells
 - Provincial or Territorial Boundary
 - Major Road
 - Winter Road
 - Pipelines
 - Production Licence
 - Significant Discovery Licence
- NWT Hydrocarbon Potential**
NWT: NTGO - Open File 2005 - 04
- High - Very High
 - High / Moderate - Moderate - Moderate / Low
- Inuvialuit Settlement Area
 - Gwich'in Settlement Area
 - Sahtu, Dene and Metis Settlement Area
 - Tłı̨chǫ Settlement Lands

Document: Cameron_Hills_Map_for_Website_v18_Feb16_2023.mxd
 Document Security: PUBLIC
 Source: Mineral and Petroleum Resources Division, Industry Tourism and Investment
 Projection: Modified Lambert Conformal Conic
 Central Meridian: 117.5°W
 Standard Parallels: 62°N, 70°N
 Datum: WGS84



| LAND_CODE | CURR_HECT | INIT_HECT | SHORT_DESC | LANDTYPE | AGREETYP | COORD | STATUS_DTE | COMPANY_NM | ISSUE_DTE | EXPIRY_DTE | LANDTYPE | AGREETYP_E | Perimeter_km | Area_km2 | Acres | Hectares |
|-----------|-----------|-----------|--------------------|----------|----------|-------|------------|---------------------------------------|-----------|------------|----------|-------------------------------|--------------|-----------|--------------|-------------|
| PL03 | 80 | 80 | CAMERON L-47 | T | PL | NAD27 | 2/13/1990 | Strategic Oil & Gas Ltd. | 2/13/2015 | 2/13/2020 | Title | Production Licence | 3.597131 | 0.806845 | 199.375819 | 80.684531 |
| PL04 | 323 | 323 | CAMERON HILLS A-05 | T | PL | NAD27 | 6/16/1992 | ALVAREZ & MARSAL CANADA INC. | 6/16/1992 | 6/16/2022 | Title | Production Licence | 7.201131 | 3.233868 | 799.106088 | 323.38676 |
| PL05 | 322 | 322 | CAMERON HILLS A-05 | T | PL | NAD27 | 12/2/1992 | Strategic Oil & Gas Ltd. | 12/2/1992 | 12/2/2022 | Title | Production Licence | 7.190824 | 3.224136 | 796.701327 | 322.413588 |
| PL13 | 1292 | 1292 | CAMERON HILLS A-05 | T | PL | NAD27 | 2/7/2002 | Strategic Oil & Gas Ltd. | 2/7/2002 | 2/6/2027 | Title | Production Licence | 14.39711 | 12.925742 | 3194.020285 | 1292.57415 |
| PL14 | 4517 | 4517 | CAMERON HILLS A-05 | T | PL | NAD27 | 2/7/2002 | Strategic Oil & Gas Ltd. | 2/7/2002 | 2/6/2027 | Title | Production Licence | 35.970246 | 45.197463 | 11168.536242 | 4519.746262 |
| PL15 | 3220 | 3220 | CAMERON HILLS C-50 | T | PL | NAD27 | 2/7/2002 | Strategic Oil & Gas Ltd. | 2/7/2002 | 2/6/2027 | Title | Production Licence | 28.058372 | 32.247913 | 7968.632819 | 3224.79129 |
| PL16 | 1930 | 1930 | SWEDE A-73 | T | PL | NAD27 | 2/7/2002 | Strategic Oil & Gas Ltd. | 2/7/2002 | 2/6/2027 | Title | Production Licence | 21.557877 | 19.315593 | 4772.987 | 1931.55931 |
| PL17 | 1292 | 1292 | CAMERON HILLS | T | PL | NAD27 | 3/10/2003 | Strategic Oil & Gas Ltd. | 3/10/2003 | 3/9/2028 | Title | Production Licence | 25.368837 | 12.928986 | 3194.821997 | 1292.898592 |
| PL18 | 966 | 966 | CAMERON HILLS | T | PL | NAD27 | 3/27/2003 | Strategic Oil & Gas Ltd. | 3/27/2003 | 3/26/2028 | Title | Production Licence | 17.806047 | 9.675652 | 2390.905622 | 967.565177 |
| PL19 | 1935 | 1935 | CAMERON HILLS | T | PL | NAD27 | 5/11/2005 | Strategic Oil & Gas Ltd. | 2/5/2004 | 2/4/2029 | Title | Production Licence | 28.429161 | 19.35711 | 4783.245996 | 1935.710978 |
| PL20 | 969 | 969 | CAMERON HILLS | T | PL | NAD27 | 5/13/2004 | Strategic Oil & Gas Ltd. | 5/13/2004 | 5/12/2029 | Title | Production Licence | 14.404855 | 9.704159 | 2397.949926 | 970.415906 |
| PL21 | 323 | 323 | CAMERON HILLS | T | PL | NAD27 | 5/12/2004 | Strategic Oil & Gas Ltd. | 5/13/2004 | 5/12/2029 | Title | Production Licence | 7.202848 | 3.235489 | 799.506651 | 323.548863 |
| PL22 | 322 | 322 | CAMERON HILLS | T | PL | NAD27 | 5/12/2004 | Strategic Oil & Gas Ltd. | 5/13/2004 | 5/12/2029 | Title | Production Licence | 7.192543 | 3.225759 | 797.10229 | 322.575852 |
| PL23 | 283 | 283 | CAMERON HILLS | T | PL | NAD27 | 5/12/2004 | Strategic Oil & Gas Ltd. | 5/13/2004 | 5/12/2029 | Title | Production Licence | 8.05037 | 2.823958 | 697.815275 | 282.395823 |
| PL24 | 966 | 966 | CAMERON HILLS | T | PL | NAD27 | 5/12/2004 | Strategic Oil & Gas Ltd. | 5/13/2004 | 5/12/2029 | Title | Production Licence | 17.792192 | 9.662668 | 2387.697314 | 966.266821 |
| SDL004 | 321 | 321 | SDA A0090 - EL171 | T | SDL | NAD27 | 2/15/1987 | Apache Canada Ltd. | 2/15/1987 | <Null> | Title | Significant Discovery Licence | 7.175344 | 3.209519 | 793.089322 | 320.951861 |
| SDL007 | 1292 | 2261 | SDA A0019 - EL213 | T | SDL | NAD27 | 3/25/2010 | Strategic Oil & Gas Ltd. | 2/15/1987 | <Null> | Title | Significant Discovery Licence | 21.607665 | 12.941017 | 3197.795045 | 1294.101742 |
| SDL008 | 1938 | 1938 | SDA A0020 - EL213 | T | SDL | NAD27 | 2/15/1987 | Strategic Oil & Gas Ltd. | 2/15/1987 | <Null> | Title | Significant Discovery Licence | 17.841491 | 19.417789 | 4798.240045 | 1941.778854 |
| SDL010 | 646 | 646 | SDA A0022 - EL213 | T | SDL | NAD27 | 2/15/1987 | Strategic Oil & Gas Ltd. | 2/15/1987 | <Null> | Title | Significant Discovery Licence | 10.63952 | 6.474218 | 1599.814099 | 647.421796 |
| SDL011 | 3771 | 3771 | SDA A0080 - EL236 | T | SDL | NAD27 | 2/15/1987 | ConocoPhillips Canada Resources Corp. | 2/15/1987 | <Null> | Title | Significant Discovery Licence | 27.996522 | 37.752513 | 9328.849191 | 3775.251326 |
| SDL101 | 323 | 323 | SDA A0022 - EL312 | T | SDL | NAD27 | 12/7/1990 | Strategic Oil & Gas Ltd. | 12/7/1990 | <Null> | Title | Significant Discovery Licence | 7.202848 | 3.235489 | 799.506675 | 323.548872 |
| SDL103 | 2260 | 3227 | Cameron Hills | T | SDL | NAD27 | 3/12/2004 | Strategic Oil & Gas Ltd. | 12/7/1990 | <Null> | Title | Significant Discovery Licence | 43.521118 | 22.607883 | 5586.529564 | 2260.788304 |
| SDL104 | 968 | 1290 | SDA A0135 - EL312 | T | SDL | NAD27 | 5/12/2004 | Strategic Oil & Gas Ltd. | 12/7/1990 | <Null> | Title | Significant Discovery Licence | 14.38768 | 9.679838 | 2391.940038 | 967.98379 |
| SDL105 | 283 | 566 | SDA A0134 - EL312 | T | SDL | NAD27 | 5/12/2004 | Strategic Oil & Gas Ltd. | 12/7/1990 | <Null> | Title | Significant Discovery Licence | 8.05037 | 2.823958 | 697.815294 | 282.395831 |
| SDL106 | 1612 | 5798 | SDA A0127 - EL312 | T | SDL | NAD27 | 12/7/1990 | Strategic Oil & Gas Ltd. | 12/7/1990 | <Null> | Title | Significant Discovery Licence | 18.155824 | 16.129732 | 3985.743701 | 1612.973249 |
| SDL107 | 966 | 1932 | SDA A0127 - EL327 | T | SDL | NAD27 | 5/12/2004 | Strategic Oil & Gas Ltd. | 12/7/1990 | <Null> | Title | Significant Discovery Licence | 14.372176 | 9.660099 | 2387.062561 | 966.009946 |
| SDL108 | 322 | 322 | SDA A0132 - EL312 | T | SDL | NAD27 | 12/7/1990 | Strategic Oil & Gas Ltd. | 12/7/1990 | <Null> | Title | Significant Discovery Licence | 7.189105 | 3.222513 | 796.30024 | 322.251274 |
| SDL109 | 5139 | 7069 | SDA A0132 - EL327 | T | SDL | NAD27 | 12/7/1990 | Strategic Oil & Gas Ltd. | 12/7/1990 | <Null> | Title | Significant Discovery Licence | 43.098521 | 51.460475 | 12716.160218 | 5146.047465 |