

CALL FOR NOMINATIONS
MACKENZIE DELTA AND ARCTIC ISLANDS

DATE OF LAUNCH: OCTOBER 23, 2014

CLOSING AT 4 P.M. (MDT)

ON

NOVEMBER 21, 2014

**2014-2015 CALL FOR NOMINATIONS
MACKENZIE DELTA/ARCTIC ISLANDS**

**DATE OF LAUNCH: OCTOBER 23, 2014
CLOSING DATE: NOVEMBER 21, 2014 AT 4 P.M. (MDT)**

TABLE OF CONTENTS

CALL FOR NOMINATIONS	1
1. SUBMISSION OF NOMINATIONS	2
(a) CONTENT OF POSTING REQUESTS	2
(b) SUBMISSION OF POSTING REQUESTS	3
(c) PRIORITY OF POSTING	4
(d) RESULTING CALL FOR BIDS	4
FURTHER INFORMATION AND CONTACTS.....	5
MAP	6
GUIDELINES FOR PARCELS NORTH OF LATITUDE 60° N.....	7
POSTING REQUEST FORM	9

**2014-2015 CALL FOR NOMINATIONS
MACKENZIE DELTA/ARCTIC ISLANDS**

CLOSING AT 4 P.M. (MDT) ON NOVEMBER 21, 2014

CALL FOR NOMINATIONS

Calls for Nominations, although not required by law, are generally issued for periods ranging from one to three months. This gives industry the opportunity to identify blocks of land it would like to see posted for bidding. All nominations received through this process are given full consideration for inclusion in a succeeding Call for Bids.

MACKENZIE DELTA AND THE ARCTIC ISLANDS

The Mackenzie Delta and the Arctic Islands is a region proven to be particularly rich in petroleum resources, reflective of the economic potential for Canada's North. Although some 60 discoveries have been made, there remains high potential for new oil and gas fields in large undrilled geological structures. Lands included in the Call for Nominations fall within the Inuvialuit Settlement Region.

1. SUBMISSION OF NOMINATIONS

For Inclusion in a Call for Bids for Exploration Licences

The Minister of Industry, Tourism and Investment hereby calls for the submission of nominations for petroleum lands, as defined in the *Petroleum Resources Act*, located in the Mackenzie Delta/Arctic Islands of the Northwest Territories. A map is included.

Nominations received will configure parcels that could be included in a Call for Bids for Exploration Licences.

Lands currently under licence which revert to Territorial reserve status during the course of this Call for Nominations may also be posted. Please refer to our registry activities at <http://www.iti.gov.nt.ca/infopage/oil-and-gas-monthly-registry-activities>. This site will list any changes to licences such as surrenders and terminations and is updated frequently.

Interested parties are highly encouraged to read the proposed 2014-2015 Call for Bids for Exploration Licences in the Mackenzie Delta/Arctic Islands prior to nominating lands.

The exercise of petroleum exploration rights is subject to specific terms and conditions relating to the environment and must comply with requirements under land claims and for northern benefits. Such information is contained in the Proposed 2014-2015 Call for Bids for Exploration Licences and within the terms of the Exploration Licence.

(a) CONTENT OF POSTING REQUESTS

All posting requests must be described in accordance with the attached *Guidelines for Parcels North of Latitude 60° N*. Each tract posted shall comprise laterally or diagonally contiguous blocks.

Each tract posted shall be fully located in the Onshore as defined in the *Northwest Territories Lands and Resources Devolution Agreement*.

PARCEL SIZE

The size of the parcels posted varies according to location. The following Table 1 sets out the minimum and maximum size of parcels within each area.

Table 1 Minimum and maximum size of parcels		
Location	Minimum	Maximum
Onshore Arctic Islands	1 grid	8 grids
Onshore Arctic Islands south of latitude 75°N	1 grid	6 grids
Mainland Territories (excluding Mackenzie Delta and Tuktoyaktuk Peninsula)		
North of latitude 70°N	½ grid	3 grids
South of latitude 70°N	1 grid	6 grids
Area subject to work prohibition order	¼ grid	3 grids
Mackenzie Delta west of longitude 133°W and Tuktoyaktuk Peninsula	¼ grid	4 grids

A *Posting Request Form* is attached and should accompany the request.

Nominations abutting the Line of Delimitation on the Call for Nominations Map shall be described by grids, sections and units

(b) SUBMISSION OF POSTING REQUESTS

Posting requests must be received by November 21, 2014 at 4 p.m. (MDT), to be considered by the Minister for inclusion in a Call for Bids for Exploration Licences pursuant to Section 13 of the *Petroleum Resources Act*.

All requests must be submitted by fax and addressed as follows:

**2014-2015 MACKENZIE DELTA/ARCTIC ISLANDS CALL FOR NOMINATIONS
CLOSING DATE: NOVEMBER 21, 2014 AT 4 P.M. (MDT)**

Attention: Petroleum Resources Division
Department of Industry, Tourism and Investment
Facsimile: 867-777-5104

Requesters are advised to give prior notice of their intent to submit a fax by calling 867-777-7476 or 867-777-7484 immediately prior to transmission. Telephone confirmation will be provided, if requested, upon receipt of the fax.

Only the fax copy is necessary; original copies are not required.

All submissions received will become property of the Territory and will not be returned. All information concerning nominations will remain confidential.

(c) PRIORITY OF POSTING

Priority of posting will be determined by order of receipt. Date and time of receipt will be that recorded by the fax machine of the Petroleum Resources Division in Inuvik, NT.

In case of overlapping requests, the first to be received will have priority. The second requester will be informed of the area remaining in the request which does not overlap a prior nomination. The second requester will be required to state whether they would like to maintain their posting on the remaining lands or withdraw the request.

(d) RESULTING CALL FOR BIDS

Any individual or company which requests the posting of a parcel(s) is expected to submit a bid(s) in an ensuing Call for Bids for Exploration Licences. Requesters are advised to examine the proposed Call for Bids for Exploration Licences and terms and conditions of an Exploration Licence. The Minister reserves the right to refuse future posting requests by that individual or company should a bid not be submitted.

The Minister will take into account all nominations in developing a Call for Bids but may modify nominations to configure a bid block following consultation with the nominee

The Minister is not obliged to proceed with a Call for Bids for any lands posted.

FURTHER INFORMATION AND CONTACTS

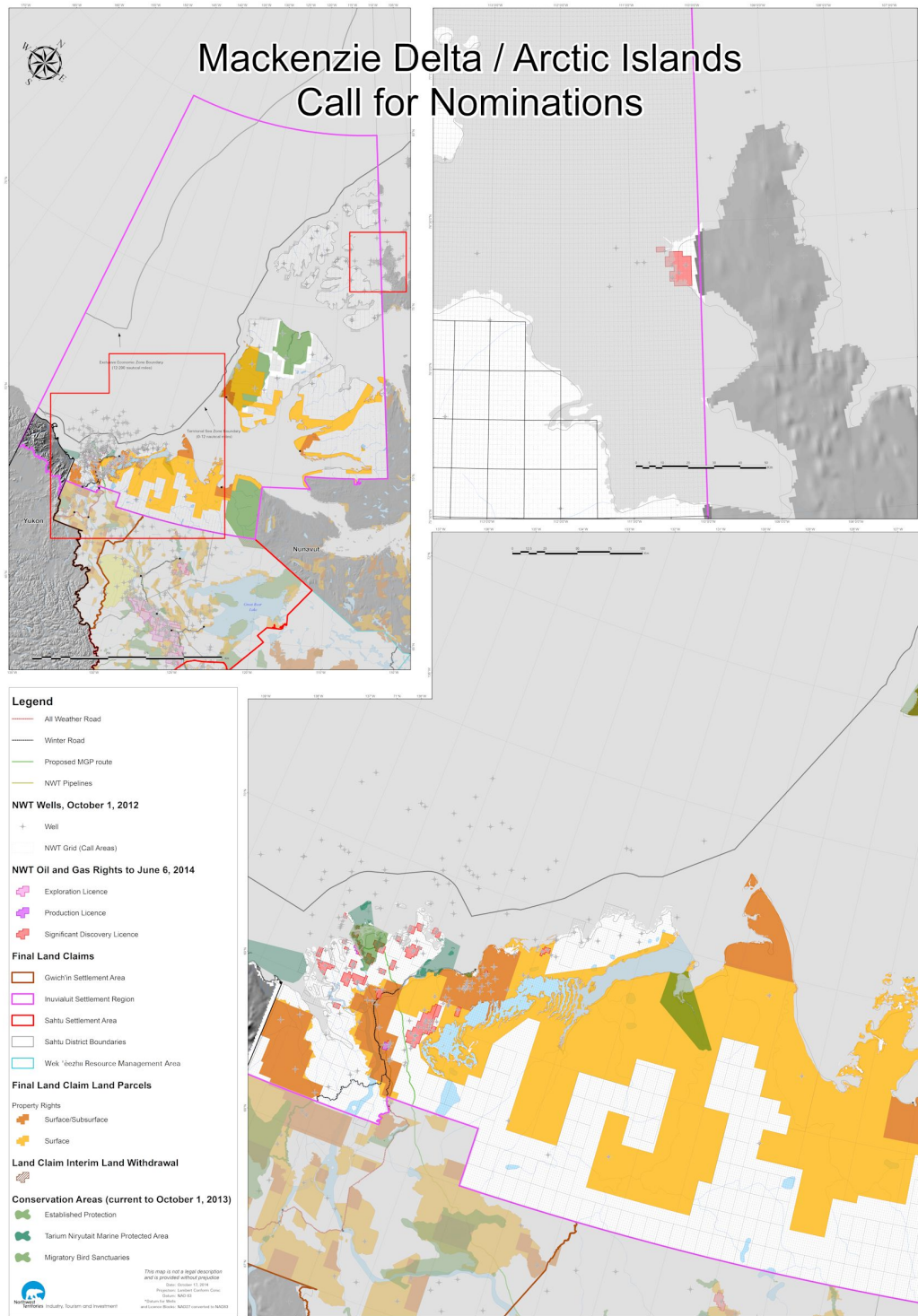
For more information on this call, the rights issuance process or the resource management regime, please contact:

Rights Administration
Petroleum Resources Division
Industry, Tourism and Investment
Government of the Northwest Territories
P.O. Box 3019
INUVIK NT X0E 0T0
Tel: 867-777-7484; Fax: 867-777-5104
www.nwtpetroleum.com

Any geological and well information with respect to the lands or area may be obtained from:

Office of the Regulator for Oil and Gas Operations
Fifth Floor, Northwestel Tower
5201 – 50th Avenue
P.O. Box 1320
YELLOWKNIFE NT X1A 2L9
<http://oilandgasregulator.iti.gov.nt.ca/>

MAP



The entire call area is comprised of available lands within the boundaries of the Inuvialuit Settlement Region.

GUIDELINES FOR PARCELS NORTH OF LATITUDE 60° N



These guidelines summarize the land description system for parcels north of latitude 60° N. For more detailed information see Section 4 of the *Oil and Gas Land Regulations*. [Geographic coordinates are referenced to North American Datum 1927 (NAD27).]

Land areas are divided into **grids**, grids into **sections**, and sections into **units**.

Grids are bounded to the east and west by successive meridians of longitude:

- for lands south of latitude 70° N, the boundaries are spaced every 15' of longitude (e.g., 122° 00' W and 122° 15' W), or
- for lands north of latitude 70° N, they are spaced every 30' of longitude (e.g., 122° 00' W and 122° 30' W).

To the north and south, the boundaries of grids are defined by straight lines joining the points of intersection of their east and west boundaries with successive parallels of latitude spaced every 10' (e.g., 60° 00' N and 60° 10' N). Every grid area is referred to by the latitude and longitude co-ordinates of its northeast corner (e.g., 60° 10' N, 122° 00' W).

The number of sections into which a grid is divided depends on the latitude where the grid is located.

A **section** is bounded to the east and west by meridians:

- for lands between latitudes 70° N and 75° N, the boundaries are spaced at intervals of 1/10 of the distance between the east and west boundaries of the grid area, or
- for lands between 60° N and 68° N, and between 75° N and 78° N, they are spaced at intervals of 1/8 of this distance, or
- for lands between 68° N and 70° N, and between 78° N and 85° N, they are spaced at intervals of 1/6 of this distance.

To the north and south, the boundaries of sections are defined by straight lines drawn parallel to the north and south boundaries of the grid and spaced at intervals of 1/10 of the distance between these boundaries.

Thus, grids have 100, 80 or 60 sections (10x10, 8x10, or 6x10) depending on their location.

The sections are numbered and each is referred to by its number (see the example in Figure 1).

Every section is divided into 16 equal **units**, each of which is identified by a letter (see Figure 2).

Figure 1: a sample grid with 80 sections

80	70	60	50	40	30	20	10
				39			
				38			
				37			
				36			
75	65	55	45	35	25	15	5
				34			
				33			
				32			
71	61	51	41	31	21	11	1

Figure 2: Units in a section

M	N	O	P
L	K	J	I
E	F	G	H
D	C	B	A

POSTING REQUEST FORM
Land Nominations for Exploration Licences



This posting request is submitted in response to the
(Select one) Mackenzie Delta/Arctic Islands
 Central Mackenzie Valley

Call for Nominations closing on _____
(Insert closing date yyyy-mm-dd)

_____, on behalf of _____,
(Name of individual) (Name of company)

(Phone number / fax number / email)

requests that the following lands be posted in the next Call for Bids to be held for the area associated with the above-noted Call for Nominations.

Signed _____ on _____
(Signature) (Date: yyyy-mm-dd)

(Print name and title)

Land Description

Please attach the land description for nominated parcel(s) which include the grid latitude, longitude, section(s), number of sections per grid, and total number of sections as per the sample below.

Sample Land Description

<i>Latitude*</i>	<i>Longitude*</i>	<i>Section(s)</i>	<i># of Sections</i>
<i>69° 40' N</i>	<i>133° 15' W</i>	<i>9-10,19-20,30</i>	<i>5</i>
<i>69° 50' N</i>	<i>133° 15' W</i>	<i>1-4,11-12,21,31</i>	<i>8</i>
<i>Total number of sections:</i>			<i>13</i>

*North American Datum 1927 (NAD27)

Each parcel requested for posting must conform to the size limitations described in the Call for Nominations.

Posting request forms must be submitted by fax to:

Petroleum Resources Division
Industry Tourism and Investment
P.O. Box 3019
INUVIK NT Canada X0E 0T0
Fax: (867) 777-5104